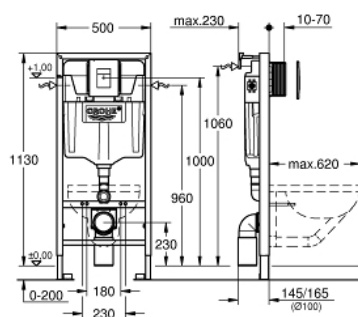


39 587 000 **RAPID SL 3-IN-1 SET FOR WC, 1.13 M INSTALLATION HEIGHT**

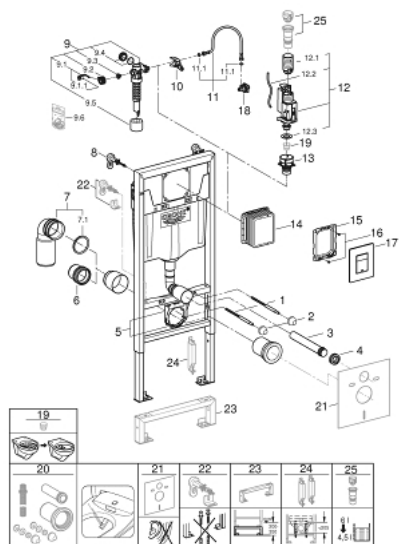


PRODUCT DESCRIPTION

- Colour: chrome
- with flushing cistern GD 2, 6 - 9 l
- consisting of:
 - Rapid SL element for WC (39 144 000)
 - Skate Cosmopolitan flush plate, chrome (38 732 000)
 - wall brackets (38 558 00M)
 - including PVC waste bend (67 546 040)



39 587 000 **RAPID SL 3-IN-1 SET FOR WC, 1.13 M INSTALLATION HEIGHT**



SELECT SPARE PART: , June 2018 – spareParts.validDate.now

- 1: Threaded bolt (Order-nr. 4276400M)
 - 2: Basin fastening (Order-nr. 43511SH0)
 - 3: Wall union (Order-nr. 43352000)
 - 4: Connector (Order-nr. 37119000)
 - 5: Support for outlet bend (Order-nr. 42243000)
 - 6: Distance pipe 3" (Order-nr. 42766000)
 - 7: PVC waste bend (Order-nr. 42216000)
 - 7.1: Seat washer (Order-nr. 4207700M)
 - 8: Wall union (Order-nr. 3855800M)
 - 9: Filling valve (Order-nr. 37095000)
 - 9.1: Lever (Order-nr. 43734000)
 - 9.1.1: Ball seal dia. 9x6.8 mm (Order-nr. 4377000M)
 - 9.2: Valve head (Order-nr. 43536000)
 - 9.3: Membrane (Order-nr. 4375800M)
 - 9.4: Screw cap (Order-nr. 43735000)
 - 9.5: Valve float, 5 pcs. (Order-nr. 4379100M)
 - 9.6: Repl. kit f. seal (Order-nr. 43722000)*
 - 10: Support device (Order-nr. 42246000)
 - 11: Tube (Order-nr. 42233000)
 - 11.1: Seat washer (Order-nr. 0319100M)
 - 12: Dual Flush discharge valve AV1 (Order-nr. 42320000)
 - 12.1: Extension for overflow pipe (Order-nr. 42313000)
 - 12.2: pneumatic hose (Order-nr. 42319000)
 - 12.3: Ball seal dia. 9x6.8 mm (Order-nr. 42310000)
 - 13: Valve seat (Order-nr. 42599000)
 - 14: Inspection shaft (Order-nr. 66791000)
 - 15: Frame (Order-nr. 43207000)
 - 16: Screw dia. 4x52 mm (Order-nr. 6636200M)
 - 17: top plate w. push button (Order-nr. 42371000)
 - 18: Water Connection (Order-nr. 48561000)
 - 19: Flow restrictor (Order-nr. 42300000)*
 - 20: Retrofit kit for shower toilets Sensia Arena and IGS (Order-nr. 40899000)*
 - 21: Set for noise protection (Order-nr. 37131000)*
 - 22: Xtra wall brackets, flexible placing (Order-nr. 38733000)*
 - 23: Extension (Order-nr. 38629000)*
 - 24: Accessory (Order-nr. 38779000)*
 - 25: 4,5 l Adapter for GD2 (Order-nr. 42333000)*
- * Optional accessories