

## 38 675 001 **RAPID SL ELEMENT FOR WC, 1.13 M INSTALLATION HEIGHT, 0.42 M WIDTH**

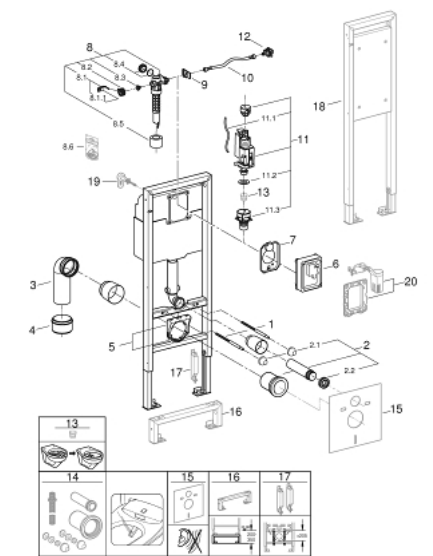


### PRODUCT DESCRIPTION

- with flushing cistern 6 l
- for WC bowls 70 cm projection
- for on-the-wall installations or studed walls
- powder coated steel frame, self-supporting
- for dry-cladding, completely pre-assembled
- with fixed connections
- fixing material
- TÜV approved
- 2 WC fixing bolts
- fixing device for ceramic
- distance of fixing bolts 180/230 mm
- outlet bend Ø 90 mm
- depth adjustable
- reducer Ø 90/110 mm
- inlet and outlet connecting set
- pneumatic discharge valve offering 3 modes of operation: dual flush or start/stop or single flush
- low noise (group I acc. to German Noise Specification)
- insulated against condensation
- ½" water supply connection including integrated angle valve and push fit flexible hose union
- for on-the-wall installation please order wall brackets 38 558 00M (sold separately)
- for the mounting of support rails for the disabled please order fixing element 38 559 001 (sold separately)



## 38 675 001 **RAPID SL ELEMENT FOR WC, 1.13 M INSTALLATION HEIGHT, 0.42 M WIDTH**



**SELECT SPARE PART:** , September 2021 – spareParts.validDate.now

- 1: Threaded bolt (Order-nr. 4276400M)
  - 2: WC inlet and outlet connecting set (Order-nr. 37311K00)
  - 2.1: Basin fastening (Order-nr. 43511SH0)
  - 2.2: Connector (Order-nr. 37119000)
  - 3: PP-outlet bend Ø 90 mm (Order-nr. 42327000)
  - 4: 4" Outlet Adaptor F Rapid SI (Order-nr. 42242000)
  - 5: Support for outlet bend (Order-nr. 42243000)
  - 6: Protection cap (Order-nr. 43944000)
  - 7: Protective plate (Order-nr. 43552000)
  - 8: Filling valve (Order-nr. 43537000)
  - 8.1: Dummy plug and escutcheon cap (Order-nr. 37125000)
  - 8.2: Lever (Order-nr. 43734000)
  - 8.2.1: Ball seal dia. 9x6.8 mm (Order-nr. 4377000M)
  - 8.3: Valve head (Order-nr. 43536000)
  - 8.4: Membrane (Order-nr. 4375800M)
  - 8.5: Screw cap (Order-nr. 43735000)
  - 8.6: Valve float, 5 pcs. (Order-nr. 4379100M)
  - 8.7: Throttle (Order-nr. 42356000)
  - 8.8: Repl. kit f. seal (Order-nr. 43722000)\*
  - 9: Support device (Order-nr. 43551000)
  - 10: Hose (Order-nr. 43349000)
  - 11: AV1 complete (Order-nr. 66558000)
  - 11.1: pneumatic hose (Order-nr. 42319000)
  - 11.2: Ball seal dia. 9x6.8 mm (Order-nr. 42310000)
  - 11.3: Valve seat for GD2 (Order-nr. 42315000)
  - 12: Water Connection (Order-nr. 48561000)
  - 13: Flow restrictor (Order-nr. 42300000)\*
  - 14: Retrofit kit for shower toilets Sensia Arena and IGS (Order-nr. 40899000)\*
  - 15: Set for noise protection (Order-nr. 37131000)\*
  - 16: Extension (Order-nr. 38629000)\*
  - 17: Accessory (Order-nr. 38779000)\*
  - 18: Fixing element, 1.13 m installation height (Order-nr. 38559001)\*
  - 19: Wall union (Order-nr. 3855800M)\*
  - 20: Retro-fit set (Order-nr. 38796000)\*
- \* Optional accessories