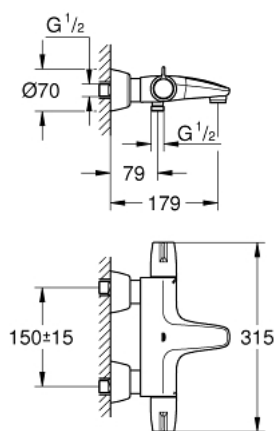


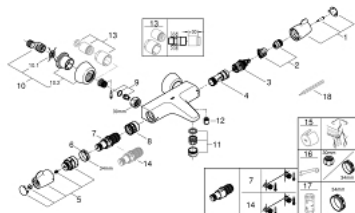
34 665 000 GROHTHERM SPECIAL THERMOSTAT BATH/SHOWER MIXER



PRODUCT DESCRIPTION

- Colour: chrome
- wall mounted
- ergonomic metal wing handles
- Aquadimmer handle with multiple function
- flow control
- integrated mixed water shut off
- diverter bath/shower
- GROHE TurboStat compact cartridge with wax thermoelement
- temperature scale handle with internal safety stop between 35°C and 43°C
- easy thermal disinfection by optional temperature unlocking handle 47 994 000
- shower bottom outlet 1/2" with integrated non return-valve
- metal temperature safety stop
- laminar mousseur
- dirt strainers
- with S-unions and with covers
- GROHE FastFixation for fast exchange of non return valves in connections
- 100% GROHE CoolTouch consisting of safety housing + S-unions with CoolTouch escutcheons
- GROHE Long-Life finish
- GROHE SafetyPlus

34 665 000 GROHTHERM SPECIAL THERMOSTAT BATH/SHOWER MIXER



SELECT SPARE PART: , July 2015 – spareParts.validDate.now

- 1: Shut-off handle (Order-nr. 49004000)
 - 2: Temperature limiter (Order-nr. 47925000)
 - 3: Aquadimmer (Order-nr. 12433000)
 - 4: Water flow (Order-nr. 47751000)
 - 5: Temperature control handle (Order-nr. 49005000)
 - 6: Fitting ring (Order-nr. 47743000)
 - 7: Thermostatic compact cartridge 1/2" (Order-nr. 47439000)
 - 7: Thermostatic compact cartridge 1/2" (Order-nr. 47885000)
 - 8: Race (Order-nr. 47975000)
 - 9: Non-return valves (Order-nr. 47979000)
 - 10: S-union (Order-nr. 12058000)
 - 10.1: Ball seal dia. 9x6.8 mm (Order-nr. 0138600M)
 - 10.2: Covering escutcheon (Order-nr. 45545000)
 - 11: Flow straightener (Order-nr. 49015000)
 - 12: Non-return valve (Order-nr. 08565000)
 - 13: Extension set 1/2", 30 mm (Order-nr. 46238000)*
 - 14: GROHE TurboStat cartridge 1/2" (Order-nr. 47175000)*
 - 15: Temperature unlocking handle (Order-nr. 47994000)*
 - 16: Special spanner (Order-nr. 19377000)*
 - 17: Socket spanner (Order-nr. 19332000)*
 - 18: Adjusting thermometer (°C) (Order-nr. 19001000)*
- * Optional accessories