

34 020 001 GROHTHERM SPECIAL THERMOSTAT BASIN MIXER 1/2"

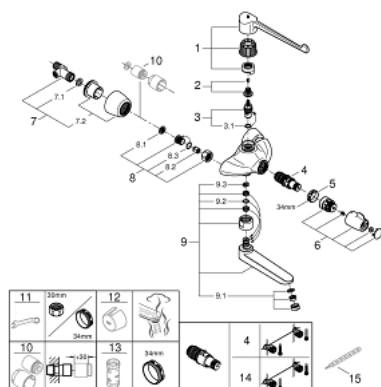


PRODUCT DESCRIPTION

- Colour: chrome
- for elbow lever actuation
- wall mounted
- ergonomic metal lever 250 mm for elbow actuation
- swivel area 100°
- metal stop
- ceramic headpart 1/2"
- GROHE TurboStat compact cartridge with wax thermoelement
- GROHE SafetyPlus ergonomic metal temperature handle with pre-adjustable safety stop between 35°C and 43°C
- easy thermal disinfection by optional temperature unlocking handle 47 994 000
- cast spout with reinforced bearing
- swivel area 90°
- lockable
- laminar flow straightener 9 l/min
- built-in non return valves and dirt strainers
- projection 255 mm
- covered S-unions
- lockable
- GROHE Long-Life finish

34 020 001 GROHTHERM SPECIAL THERMOSTAT BASIN MIXER 1/2"

SELECT SPARE PART: , August 2013 – spareParts.validDate.now



- 1: Lever 250 mm (Order-nr. 47410000)
 - 2: Replacement handle connection kit (Order-nr. 45186000)
 - 2.1: O-ring $\varnothing 18.2 \times \varnothing 1.7$ (Order-nr. 0392400M)
 - 3: Ceramic headpart, 1/2" (Order-nr. 45346000)
 - 3.1: O-ring $\varnothing 18.2 \times \varnothing 1.7$ (Order-nr. 0392400M)
 - 4: Thermostatic compact cartridge 1/2" (Order-nr. 47885000)
 - 5: Fitting ring (Order-nr. 47743000)
 - 6: Temperature control handle (Order-nr. 49072000)
 - 7: S-union (Order-nr. 12051000)
 - 7.1: Ball seal dia. 9x6.8 mm (Order-nr. 0138600M)
 - 7.2: Escutcheon (Order-nr. 45392000)
 - 8: Non-return valve (Order-nr. 47189000)
 - 8.1: Dirt strainer (Order-nr. 0726400M)
 - 8.2: Non-return valve (Order-nr. 08565000)
 - 8.3: O-ring $\varnothing 17 \times \varnothing 2$ (Order-nr. 0305500M)
 - 9: Cast swivel spout (Order-nr. 13138000)
 - 9.1: Flow straightener (Order-nr. 13960000)
 - 9.2: Sealing washer (Order-nr. 0128500M)
 - 9.3: Stop limiter (Order-nr. 0974000M)
 - 10: Extension set 1/2", 30 mm (Order-nr. 46238000)*
 - 11: Special spanner (Order-nr. 19377000)*
 - 12: Temperature unlocking handle (Order-nr. 47994000)*
 - 13: Socket spanner (Order-nr. 19332000)*
 - 14: GROHE TurboStat cartridge 1/2" (Order-nr. 47175000)*
 - 15: Adjusting thermometer ($^{\circ}\text{C}$) (Order-nr. 19001000)*
- * Optional accessories