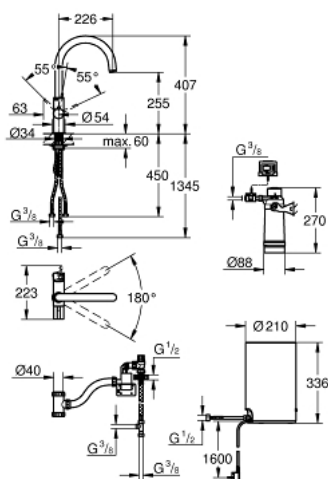


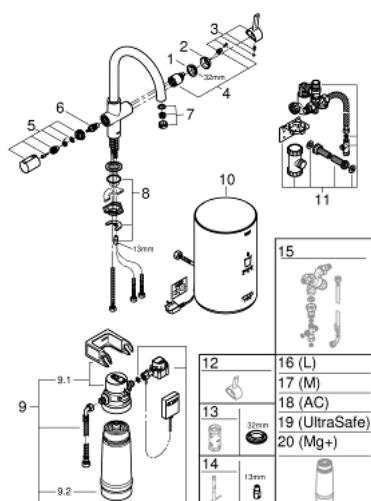
30 320 000 GROHE RED BASIC DUO FAUCET AND M SIZE BOILER



PRODUCT DESCRIPTION

- Colour: chrome
- consisting of:
 - GROHE Red Duo single-lever sink mixer
 - single hole installation
 - C-spout
 - GROHE ChildLock handle for boiling water
 - mechanical safeguard against accidental activation of boiling water
 - GROHE Long-Life finish
 - GROHE SilkMove 35 mm ceramic cartridge
 - insulated tubular spout
 - swivel area 180°
 - separate water ways
 - flexible connection hoses
 - connection for GROHE Red boiler
 - GROHE Red boiler M size
 - reservoir for boiling and hot water
 - 3 liter 100° C boiling water
 - 4 liter total capacity
 - required inlet pressure: 1-7 bar
 - with flexible connection hose and outlet for boiling water
 - CE approved
 - power supply 230 V 50 Hz
 - power consumption 2100 W
 - standby power consumption 15 W
 - energy efficiency class A
 - GROHE Blue S-Size filter starter set
 - for protection of the boiler from limescale
 - capacity 600 l at 20° dKH
 - flow rate measuring unit

30 320 000 GROHE RED BASIC DUO FAUCET AND M SIZE BOILER



SELECT SPARE PART: , May 2016 – spareParts.validDate.now

- 1: Screw coupling (Order-nr. 46460000)
- 2: Shield (Order-nr. 46116000)
- 3: Lever (Order-nr. 46653000)
- 4: Cartridge (Order-nr. 46374000)
- 5: Handle (Order-nr. 46677000)
- 6: Headpart (Order-nr. 46678000)
- 7: Mousseur (Order-nr. 13263000)
- 8: Shank mounting kit (Order-nr. 46249000)
- 9: S-size filter starter set (Order-nr. 40438001)
- 9.1: filter head (Order-nr. 64508001)
- 9.2: Filter S-Size (Order-nr. 40404001)
- 10: Boiler Size M (Order-nr. 40830001)
- 11: Safety group (Order-nr. 48371000)
- 12: Shorter mixed water lever (Order-nr. 40621000)*
- 13: Socket spanner (Order-nr. 19332000)*
- 14: Mounting wrench (Order-nr. 19017000)*
- 15: Mixing valve (Order-nr. 40841001)*
- 16: Filter L-Size (Order-nr. 40412001)*
- 17: Filter M-Size (Order-nr. 40430001)*
- 18: Activated carbon filter (Order-nr. 40547001)*
- 20: Magnesium+ filter (Order-nr. 40691001)*

* Optional accessories