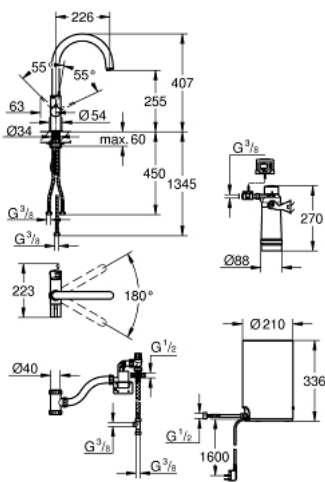


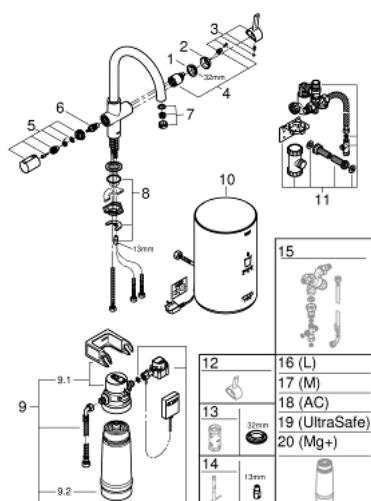
30 320 000 **GROHE RED BASIC DUO FAUCET AND M SIZE BOILER**



## PRODUCT DESCRIPTION

- Colour: chrome
- consisting of:
- GROHE Red Duo single-lever sink mixer
- single hole installation
- C-spout
- GROHE ChildLock handle for boiling water
- mechanical safeguard against accidental activation of boiling water
- GROHE Long-Life finish
- GROHE SilkMove 35 mm ceramic cartridge
- insulated tubular spout
- swivel area 180°
- separate water ways
- flexible connection hoses
- connection for GROHE Red boiler
- GROHE Red boiler M size
- reservoir for boiling and hot water
- 3 liter 100° C boiling water
- 4 liter total capacity
- required inlet pressure: 1-7 bar
- with flexible connection hose and outlet for boiling water
- CE approved
- power supply 230 V 50 Hz
- power consumption 2100 W
- standby power consumption 15 W
- energy efficiency class A
- GROHE Blue S-Size filter starter set
- for protection of the boiler from limescale
- capacity 600 l at 20° dKH
- flow rate measuring unit

## 30 320 000 GROHE RED BASIC DUO FAUCET AND M SIZE BOILER



**SELECT SPARE PART:** , May 2016 – spareParts.validDate.now

- 1: Screw coupling (Order-nr. 46460000)
- 2: Shield (Order-nr. 46116000)
- 3: Lever (Order-nr. 46653000)
- 4: Cartridge (Order-nr. 46374000)
- 5: Handle (Order-nr. 46677000)
- 6: Headpart (Order-nr. 46678000)
- 7: Mousseur (Order-nr. 13263000)
- 8: Shank mounting kit (Order-nr. 46249000)
- 9: S-size filter starter set (Order-nr. 40438001)
- 9.1: filter head (Order-nr. 64508001)
- 9.2: Filter S-Size (Order-nr. 40404001)
- 10: Boiler Size M (Order-nr. 40830001)
- 11: Safety group (Order-nr. 48371000)
- 12: Shorter mixed water lever (Order-nr. 40621000)\*
- 13: Socket spanner (Order-nr. 19332000)\*
- 14: Mounting wrench (Order-nr. 19017000)\*
- 15: Mixing valve (Order-nr. 40841001)\*
- 16: Filter L-Size (Order-nr. 40412001)\*
- 17: Filter M-Size (Order-nr. 40430001)\*
- 18: Activated carbon filter (Order-nr. 40547001)\*
- 20: Magnesium+ filter (Order-nr. 40691001)\*

\* Optional accessories