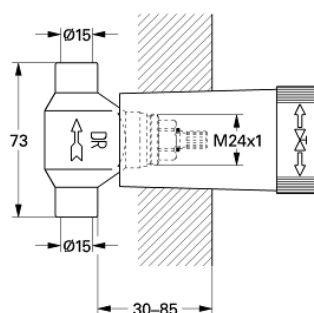


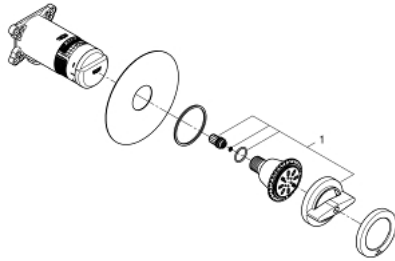
29 801 000 **CONCEALED VALVE**



PRODUCT DESCRIPTION

- pre-assembled headpart 1/2"
- short spindle
- protection sleeve
- soldered connection Ø 15 mm
- DR-brass

29 801 000 **CONCEALED VALVE**



SELECT SPARE PART: , January 1986 – spareParts.validDate.now

1: Headpart 1/2" (Order-nr. 07146000)

1.1: O-ring $\varnothing 6 \times \varnothing 2$ (Order-nr. 0128300M)

1.2: O-ring $\varnothing 18.2 \times \varnothing 1.7$ (Order-nr. 0392400M)

1.3: Ball seal dia. 9x6.8 mm (Order-nr. 0529100M)

2: Seat (Order-nr. 45023000)