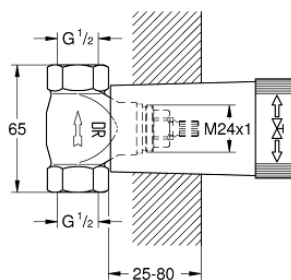


## 29 800 000 **CONCEALED VALVE**

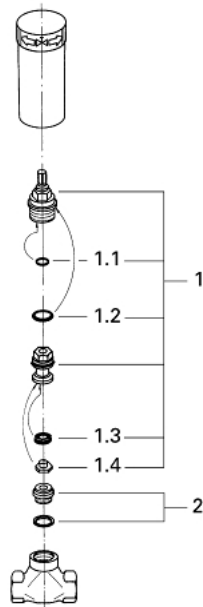


### PRODUCT DESCRIPTION

- Colour: chrome
- pre-assembled headpart 1/2"
- short spindle
- protection sleeve
- threaded union 1/2"
- DR-brass



## 29 800 000 CONCEALED VALVE



**SELECT SPARE PART:** , January 1986 – spareParts.validDate.now

1: Headpart 1/2" (Order-nr. 07146000)

1.1: O-ring  $\varnothing 6 \times \varnothing 2$  (Order-nr. 0128300M)

1.2: O-ring  $\varnothing 18.2 \times \varnothing 1.7$  (Order-nr. 0392400M)

1.3: Ball seal dia. 9x6.8 mm (Order-nr. 0529100M)

2: Seat (Order-nr. 45023000)