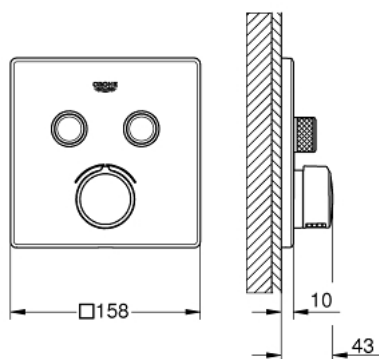


## 29 148 000 **SMARTCONTROL CONCEALED MIXER WITH 2 VALVES**

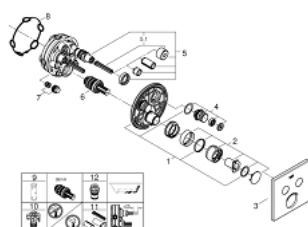


### PRODUCT DESCRIPTION

- Colour: chrome
- set for final installation for
- GROHE Rapido SmartBox (35 600/35 604)
- metal wall escutcheon with GROHE FastFixation (covered escutcheon and shaft sealing, covered fixing), retroactively 6° adjustable
- GROHE Long-Life finish
- GROHE SmartControl push for ON-OFF, turn for volume adjustment from GROHE Water Saving to full flow
- exchangeable symbols
- cartridge for temperature mixing
- multiple outlets can be run simultaneously
- without roughing-in-set
- flow performance: outlet B = 23 l/min outlet C = 25 l/min outlet B + C = 27 l/min



## 29 148 000 SMARTCONTROL CONCEALED MIXER WITH 2 VALVES



**SELECT SPARE PART:** , September 2016 – spareParts.validDate.now

- 1: Mounting plate (Order-nr. 48363000)
  - 2: Handle (Order-nr. 46990000)
  - 3: Escutcheon (Order-nr. 46995000)
  - 4: Push button (Order-nr. 48361000)
  - 5: Cartridge (Order-nr. 48359000)
  - 5.1: Spindle (Order-nr. 49088000)
  - 6: Cartridge (Order-nr. 46989000)
  - 7: Non-return valves (Order-nr. 47979000)
  - 8: Ball seal dia. 9x6.8 mm (Order-nr. 48360000)
  - 9: Socket spanner (Order-nr. 49059000)\*
  - 10: Service stops (Order-nr. 1405300M)\*
  - 11: Universal extension set single-lever mixers, 25 mm (Order-nr. 14048000)\*
  - 12: Backflow protection combination (EN1717) (Order-nr. 14055000)\*
- \* Optional accessories