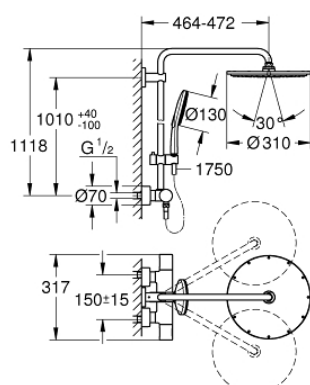


## 27 966 001 RAINSHOWER SMARTACTIVE 310 SHOWER SYSTEM WITH THERMOSTAT FOR WALL MOUNTING

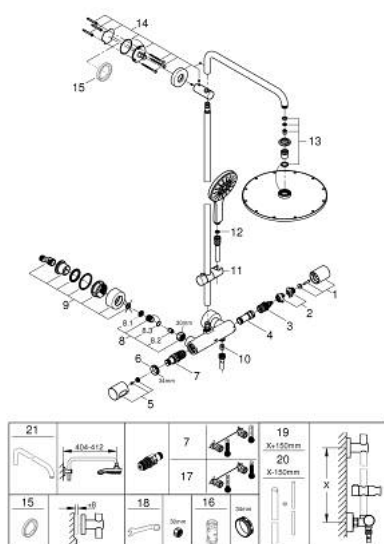


### PRODUCT DESCRIPTION

- Colour: chrome
- consisting of:
  - horizontal swivable 450 mm shower arm
  - exposed thermostat with Aquadimmer function
  - allows change between:
    - Rainshower Cosmopolitan 310 head shower
  - material: metal
  - with ball joint
  - rotation angle  $\pm 15^\circ$
  - Rainshower SmartActive 130 hand shower 3 sprays
  - adjustable in height with gliding element
  - Silverflex shower hose 1750 mm
- GROHE TurboStat compact cartridge with wax thermoelement
- GROHE SafeStop at  $38^\circ\text{C}$
- GROHE SafeStop Plus optional temperature limiter at  $43^\circ\text{C}$  included
- GROHE CoolTouch no risk of scalding
- GROHE DreamSpray perfect spray pattern
- GROHE SmartTip showering spray selection via push of a ring
- GROHE Long-Life finish
- GROHE FastFixation upper bracket adjustable
- SpeedClean anti-lime system
- suitable for instantaneous heaters from 18 kW/h
- minimum flow rate 7 l/min.



## 27 966 001 RAINSHOWER SMARTACTIVE 310 SHOWER SYSTEM WITH THERMOSTAT FOR WALL MOUNTING



**SELECT SPARE PART:** , August 2018 – spareParts.validDate.now

- 1: Aquadimmer handle (Order-nr. 47804000)
  - 2: Temperature limiter (Order-nr. 47723000)
  - 3: Aquadimmer (Order-nr. 47364000)
  - 4: Water flow (Order-nr. 47887000)
  - 5: Scale handle (Order-nr. 47811000)
  - 6: Fitting ring (Order-nr. 47743000)
  - 7: Thermostatic compact cartridge 1/2" (Order-nr. 47439000)
  - 8: Non-return valve (Order-nr. 47189000)
  - 8.1: Dirt strainer (Order-nr. 0726400M)
  - 8.2: Non-return valve (Order-nr. 08565000)
  - 8.3: O-ring  $\varnothing 17 \times \varnothing 2$  (Order-nr. 0305500M)
  - 9: S-union (Order-nr. 12693000)
  - 10: Non-return valve (Order-nr. 08565000)
  - 11: Sliding piece (Order-nr. 12140000)
  - 12: Dirt strainer (Order-nr. 0700200M)
  - 13: Inlet valve assembly (Order-nr. 45933000)
  - 14: Outlet shower holder (Order-nr. 48279000)
  - 15: Compensation disc (Order-nr. 27180000)\*
  - 16: Socket spanner (Order-nr. 19332000)\*
  - 17: GROHE TurboStat cartridge 1/2" (Order-nr. 47175000)\*
  - 18: Special spanner (Order-nr. 19377000)\*
  - 19: Shower system pipe for retrofitting (Order-nr. 48053000)\*
  - 20: Shower system pipe for retrofitting (Order-nr. 48054000)\*
  - 21: Shower arm for shower systems (Order-nr. 14047000)\*
- \* Optional accessories