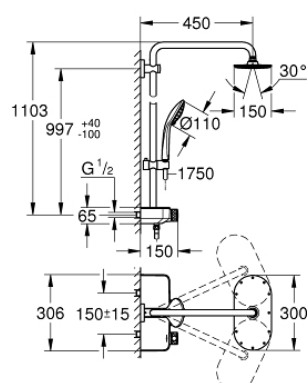


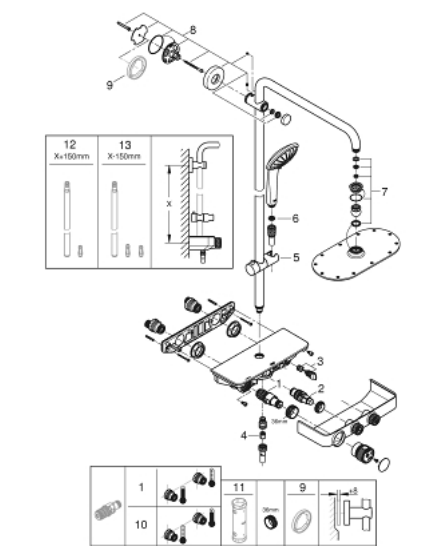
26 996 000 EUPHORIA SMARTCONTROL SYSTEM 300 MONO WALL MOUNTED THERMOSTATIC SHOWER SYSTEM



PRODUCT DESCRIPTION

- Colour: chrome
- consisting of:
 - horizontal 450 mm shower arm
 - upper bracket adjustable for minimal adaption to existing drilling holes
 - exposed SmartControl thermostat
 - allows change between:
 - head shower Veris 300 Mono (27 470)
 - spray pattern: Rain
 - with ball joint
 - rotation angle $\pm 15^\circ$
 - GROHE Water Saving 12 l/min flow limiter
 - hand shower Euphoria 110 Massage (27 239 000)
 - 3 spray patterns:
 - Rain, SmartRain, Massage
 - adjustable in height with gliding element
 - GROHE Water Saving 9.5 l/min flow limiter
 - Rotaflex TwistStop shower hose 1.750 mm 1/2" x 1/2" (28 410)
 - GROHE DreamSpray perfect spray pattern
 - GROHE Long-Life finish
 - GROHE CoolTouch no risk of scalding
 - GROHE ProGrip with knurl structure
 - GROHE Water Saving - Less water, perfect flow
 - - GROHE SafeStop at 38°C
 - GROHE SafeStop Plus optional temperature limiter at 43°C included
 - GROHE SmartControl push for ON-OFF, turn for volume adjustment from GROHE Water Saving to Full Flow
 - integrated GROHE EasyReach shower tray
 - SpeedClean anti-lime system
 - Inner WaterGuide for a longer life
 - TwistStop to prevent hose from twisting
 - suitable for instantaneous heaters from 18 kW/h

26 996 000 EUPHORIA SMARTCONTROL SYSTEM 300 MONO WALL MOUNTED THERMOSTATIC SHOWER SYSTEM



SELECT SPARE PART: , June 2022 – spareParts.validDate.now

- 1: Thermostatic compact cartridge 1/2" (Order-nr. 47439000)
 - 2: Cartridge (Order-nr. 48297000)
 - 3: Non-return valve (Order-nr. 49069000)
 - 4: Non-return valve (Order-nr. 08565000)
 - 5: Sliding piece (Order-nr. 48177000)
 - 6: Dirt strainer (Order-nr. 0700200M)
 - 7: Inlet valve assembly (Order-nr. 48471000)
 - 8: Outlet shower holder (Order-nr. 48279000)
 - 9: Compensation disc (Order-nr. 27180000)*
 - 10: GROHE TurboStat cartridge 1/2" (Order-nr. 47175000)*
 - 11: Socket spanner (Order-nr. 49059000)*
 - 12: Shower system pipe for retrofitting (Order-nr. 48499000)*
 - 13: Shower system pipe for retrofitting (Order-nr. 48498000)*
- * Optional accessories