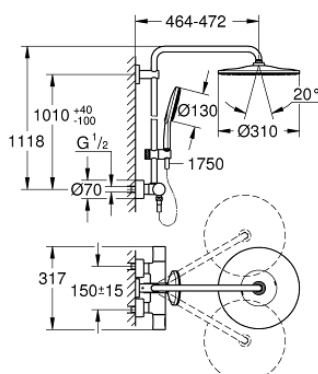
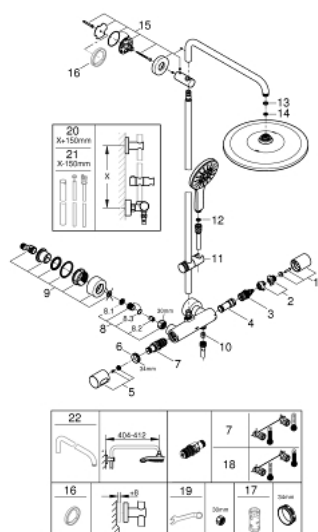


26 836 AL0 RAINSHOWER SMARTACTIVE 310 SHOWER SYSTEM WITH THERMOSTAT FOR WALL MOUNTING



PRODUCT DESCRIPTION

- Colour: brushed hard graphite
- consisting of:
 - horizontal swivable 450 mm shower arm
 - exposed thermostat with Aquadimmer function
 - allows change between:
 - head shower Rainshower Mono 310
 - with ball joint
 - rotation angle $\pm 15^\circ$
 - hand shower Rainshower SmartActive 130
 - adjustable in height with gliding element
 - including performance grip
- Silverflex shower hose 1750 mm
- GROHE Water Saving 9.5 l/min flow limiter
- GROHE TurboStat compact cartridge with wax thermoelement
- GROHE SafeStop at 38°C
- GROHE SafeStop Plus optional temperature limiter at 43°C included
- GROHE CoolTouch no risk of scalding
- GROHE DreamSpray perfect spray pattern
- GROHE SmartTip showering spray selection via push of a ring
- GROHE Long-Life finish
- GROHE FastFixation upper bracket adjustable
- SpeedClean anti-lime system
- suitable for instantaneous heaters from 18 kW/h
- minimum flow rate 5 l/min.
- DR-brass



- 1: shut-off handle aquadimmer (Order-nr. 47804AL0)
- 2: Temperature limiter (Order-nr. 47723000)
- 3: Aquadimmer (Order-nr. 47364000)
- 4: Water flow (Order-nr. 47887000)
- 5: temperature control handle (Order-nr. 47811AL0)
- 6: Fitting ring (Order-nr. 47743000)
- 7: Thermostatic compact cartridge 1/2" (Order-nr. 47439000)
- 8: Non-return valve (Order-nr. 47189AL0)
- 8.1: Dirt strainer (Order-nr. 0726400M)
- 8.2: Non-return valve (Order-nr. 08565000)
- 8.3: O-ring $\varnothing 17 \times \varnothing 2$ (Order-nr. 0305500M)
- 9: S-union (Order-nr. 12693AL0)
- 10: Non-return valve (Order-nr. 08565000)
- 11: Sliding piece (Order-nr. 48424AL0)
- 12: Dirt strainer (Order-nr. 0700200M)
- 13: Fibre seal dia. 12x2 mm (Order-nr. 0138900M)
- 14: Dirt strainer (Order-nr. 48007000)
- 15: Outlet shower holder (Order-nr. 48279AL0)
- 17: Socket spanner (Order-nr. 19332000)*
- 18: GROHE TurboStat cartridge 1/2" (Order-nr. 47175000)*
- 19: Special spanner (Order-nr. 19377000)*

* Optional accessories