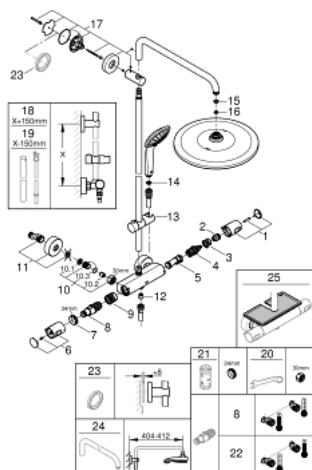


The technical drawing illustrates the shower system (model 1003) in two views. The top view is a side profile showing the vertical riser pipe, the overhead showerhead, the handheld showerhead on a sliding bar, and the thermostatic mixer tap. The bottom view is a detailed cross-section of the wall mounting, showing the connection points for the water supply (G 1/2), the drain (Ø 70), and the shower pan. Dimensions are provided for the overall height (1116), the distance from the wall to the showerhead (1003 +40/-100), the showerhead diameter (Ø 310), the showerhead angle (20°), the showerhead height (1750), the shower pan diameter (Ø 110), the shower pan thickness (15), and the shower pan mounting holes (308, 150x15).

- Colour: chrome
- consisting of:
 - horizontal swivable 450 mm shower arm
 - exposed thermostat with Aquadimmer function
 - allows change between:
 - head shower Rainshower Mono 310 (26 562)
 - spray pattern:
 - GROHE PureRain
 - with ball joint
 - rotation angle $\pm 15^\circ$
 - hand shower Euphoria 110 Massage (27 239 000)
 - 3 spray patterns:
 - Rain, Massage, SmartRain
 - adjustable in height with gliding element
 - Silverflex shower hose 1750 mm (28 388 000)
 - GROHE TurboStat compact cartridge with wax thermoelement
 - GROHE SafeStop at 38°C
 - GROHE SafeStop Plus integrated temperature limiter at max 50°C
 - GROHE CoolTouch no risk of scalding
 - GROHE MetalGrip ergonomically shaped metal handles
 - GROHE DreamSpray perfect spray pattern
 - GROHE Long-Life finish
 - GROHE SprayDimmer (Stepless flow rate reduction)
 - GROHE Water Saving 9.5 l/min flow limiter
 - GROHE FastFixation upper bracket adjustable
 - Inner WaterGuide for a longer life
 - SpeedClean anti-lime system
 - TwistStop to prevent hose from twisting
 - suitable for instantaneous heaters from 18 kW/h
 - minimum flow rate 7 l/min.
 - optional upgrade: GROHE EasyReach tray (26 362), sold separately
 - professional edition

26 384 002 EUPHORIA SYSTEM 310 SHOWER SYSTEM WITH THERMOSTATIC MIXER FOR WALL MOUNTING



SELECT SPARE PART: , January 2020 – spareParts.validDate.now

- 1: Shut-off handle (Order-nr. 47991000)
 - 2: Stop ring (Order-nr. 47986000)
 - 3: Stop ring (Order-nr. 47965000)
 - 4: Aquadimmer (Order-nr. 47364000)
 - 5: Water flow (Order-nr. 47887000)
 - 6: temperature control handle (Order-nr. 48553000)
 - 7: Fitting ring (Order-nr. 47743000)
 - 8: Thermostatic compact cartridge 1/2" (Order-nr. 47885000)
 - 9: Race (Order-nr. 47975000)
 - 10: Non-return valve (Order-nr. 47189000)
 - 10.1: Dirt strainer (Order-nr. 0726400M)
 - 10.2: Non-return valve (Order-nr. 08565000)
 - 10.3: O-ring $\varnothing 17 \times \varnothing 2$ (Order-nr. 0305500M)
 - 11: S-union (Order-nr. 12662000)
 - 12: Non-return valve (Order-nr. 47886000)
 - 13: Sliding piece (Order-nr. 12140000)
 - 14: Dirt strainer (Order-nr. 0700200M)
 - 15: Fibre seal dia. 12x2 mm (Order-nr. 0138900M)
 - 16: Dirt strainer (Order-nr. 48007000)
 - 17: Outlet shower holder (Order-nr. 48279000)
 - 18: Shower system pipe for retrofitting (Order-nr. 48514000)*
 - 19: Shower system pipe for retrofitting (Order-nr. 48515000)*
 - 20: Special spanner (Order-nr. 19377000)*
 - 21: Socket spanner (Order-nr. 19332000)*
 - 22: GROHE TurboStat cartridge 1/2" (Order-nr. 47175000)*
 - 23: Compensation disc (Order-nr. 27180000)*
 - 24: Shower arm for shower systems (Order-nr. 14047000)*
 - 25: GROHE EasyReach tray (Order-nr. 26362LN1)*
- * Optional accessories