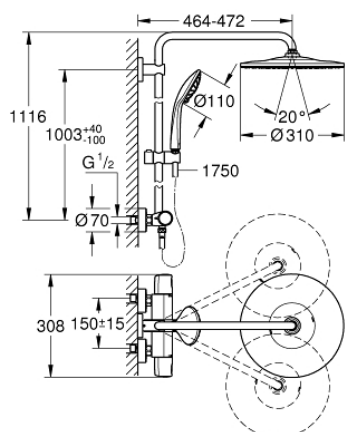


## 26 384 002 EUPHORIA SYSTEM 310 SHOWER SYSTEM WITH THERMOSTATIC MIXER FOR WALL MOUNTING



### PRODUCT DESCRIPTION (1/2)

- Colour: chrome
- consisting of:
  - horizontal swivable 450 mm shower arm
  - exposed thermostat with Aquadimmer function
  - allows change between:
    - head shower Rainshower Mono 310 (26 562)
    - spray pattern:
      - GROHE PureRain
      - maximum flow rate (at 3 bar): 9.5 l/min
    - with ball joint
    - rotation angle  $\pm 15^\circ$
  - hand shower Euphoria 110 Massage (27 239 000)
- 3 spray patterns:
  - Rain, Massage, SmartRain
  - maximum flow rate (at 3 bar): 9 l/min
  - adjustable in height with gliding element
- Silverflex shower hose 1750 mm 1/2" x 1/2" (28 388 000)
- GROHE TurboStat compact cartridge with wax thermoelement
- GROHE SafeStop at 38°C
- GROHE SafeStop Plus integrated temperature limiter at max 50°C
- GROHE CoolTouch no risk of scalding
- GROHE MetalGrip ergonomically shaped metal handles
- GROHE DreamSpray perfect spray pattern
- GROHE Long-Life finish
- GROHE SprayDimmer (Stepless flow rate reduction)
- GROHE Water Saving - Less water, perfect flow
- GROHE FastFixation upper bracket adjustable
- Inner WaterGuide for a longer life
- SpeedClean anti-lime system
- TwistStop to prevent hose from twisting
- suitable for instantaneous heaters from 18 kW/h
- minimum flow rate 7 l/min.
- optional upgrade: GROHE EasyReach tray (26 362), sold separately

Pure Freude  
an Wasser

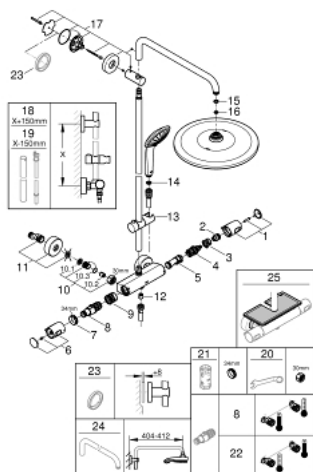


## 26 384 002 **EUPHORIA SYSTEM 310 SHOWER SYSTEM WITH THERMOSTATIC MIXER FOR WALL MOUNTING**

### **PRODUCT DESCRIPTION** (2/2)

- professional edition

## 26 384 002 EUPHORIA SYSTEM 310 SHOWER SYSTEM WITH THERMOSTATIC MIXER FOR WALL MOUNTING



### SELECT SPARE PART: , January 2020 – spareParts.validDate.now

- 1: Shut-off handle (Order-nr. 47991000)
  - 2: Stop ring (Order-nr. 47986000)
  - 3: Stop ring (Order-nr. 47965000)
  - 4: Aquadimmer (Order-nr. 47364000)
  - 5: Water flow (Order-nr. 47887000)
  - 6: Temperature control handle (Order-nr. 48553000)
  - 7: Fitting ring (Order-nr. 47743000)
  - 8: Thermostatic compact cartridge 1/2" (Order-nr. 47885000)
  - 9: Race (Order-nr. 47975000)
  - 10: Non-return valve (Order-nr. 47189000)
  - 10.1: Dirt strainer (Order-nr. 0726400M)
  - 10.2: Non-return valve (Order-nr. 08565000)
  - 10.3: O-ring  $\varnothing 17 \times \varnothing 2$  (Order-nr. 0305500M)
  - 11: S-union (Order-nr. 12662000)
  - 12: Non-return valve (Order-nr. 47886000)
  - 13: Sliding piece (Order-nr. 12140000)
  - 14: Dirt strainer (Order-nr. 0700200M)
  - 15: Fibre seal dia. 12x2 mm (Order-nr. 0138900M)
  - 16: Dirt strainer (Order-nr. 48007000)
  - 17: Outlet shower holder (Order-nr. 48279000)
  - 18: Shower system pipe for retrofitting (Order-nr. 48514000)\*
  - 19: Shower system pipe for retrofitting (Order-nr. 48515000)\*
  - 20: Special spanner (Order-nr. 19377000)\*
  - 21: Socket spanner (Order-nr. 19332000)\*
  - 22: GROHE TurboStat cartridge 1/2" (Order-nr. 47175000)\*
  - 23: Compensation disc (Order-nr. 27180000)\*
  - 24: Shower arm for shower systems (Order-nr. 14047000)\*
  - 25: GROHE EasyReach tray (Order-nr. 26362LN1)\*
- \* Optional accessories