

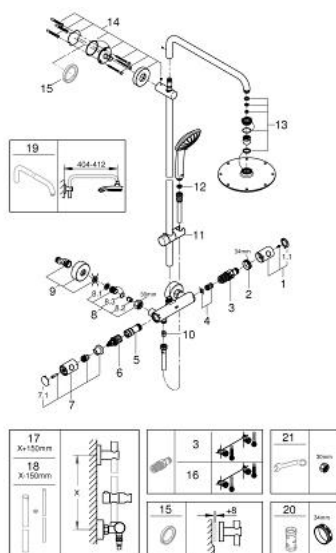
## 26 383 000 EUPHORIA SYSTEM 210 SHOWER SYSTEM WITH THERMOSTAT FOR WALL MOUNTING



### PRODUCT DESCRIPTION

- Colour: chrome
- consisting of:
  - horizontal swivable 450 mm shower arm
- GROHE MetalGrip ergonomically shaped metal handles
- exposed thermostat with Aquadimmer function
- allows change between:
  - Rainshower Cosmopolitan 210 metal head shower
- spray pattern: Rain
- GROHE Water Saving 12 l/min flow limiter
- with ball joint
- rotation angle  $\pm 15^\circ$
- hand shower Euphoria 110 Massage
- GROHE Water Saving 9.5 l/min flow limiter
- adjustable in height with gliding element
- Silverflex shower hose 1750 mm (28 388 000)
- minimum flow rate 7 l/min.
- GROHE DreamSpray perfect spray pattern
- GROHE Long-Life finish
- GROHE TurboStat compact cartridge with wax thermoelement
- SpeedClean anti-lime system
- Inner WaterGuide for a longer life
- TwistStop to prevent hose from twisting
- suitable for instantaneous heaters from 18 kW/h
- optional upgrade: GROHE EasyReach tray (26 362), sold separately

## 26 383 000 EUPHORIA SYSTEM 210 SHOWER SYSTEM WITH THERMOSTAT FOR WALL MOUNTING



**SELECT SPARE PART:** , February 2017 – spareParts.validDate.now

- 1: Temperature control handle (Order-nr. 47985000)
- 1.1: Cap (Order-nr. 6458500M)
- 2: Fitting ring (Order-nr. 47743000)
- 3: Thermostatic compact cartridge 1/2" (Order-nr. 47885000)
- 4: Sound absorber (Order-nr. 47398000)
- 5: Water flow (Order-nr. 47751000)
- 6: Aquadimmer (Order-nr. 12433000)
- 7: Costa metal handle 1/2" (Order-nr. 47984000)
- 7.1: Cap (Order-nr. 6458500M)
- 8: Non-return valve (Order-nr. 47189000)
- 8.1: Dirt strainer (Order-nr. 0726400M)
- 8.2: Non-return valve (Order-nr. 08565000)
- 8.3: O-ring  $\varnothing 17 \times \varnothing 2$  (Order-nr. 0305500M)
- 9: S-union (Order-nr. 12662000)
- 10: Non-return valve (Order-nr. 08565000)
- 11: Sliding piece (Order-nr. 12140000)
- 12: Dirt strainer (Order-nr. 0700200M)
- 13: Inlet valve assembly (Order-nr. 45933000)
- 14: Outlet shower holder (Order-nr. 48279000)
- 15: Compensation disc (Order-nr. 27180000)\*
- 16: GROHE TurboStat cartridge 1/2" (Order-nr. 47175000)\*
- 17: Shower system pipe for retrofitting (Order-nr. 48053000)\*
- 18: Shower system pipe for retrofitting (Order-nr. 48054000)\*
- 19: Shower arm for shower systems (Order-nr. 14047000)\*
- 20: Socket spanner (Order-nr. 19332000)\*
- 21: Special spanner (Order-nr. 19377000)\*

\* Optional accessories