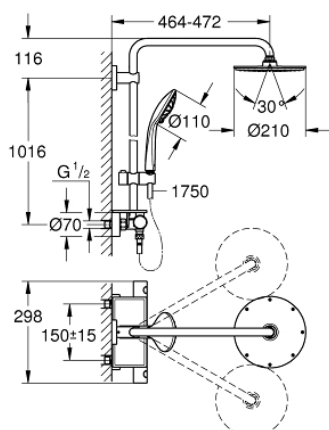


26 363 000 EUPHORIA SYSTEM 210 SHOWER SYSTEM WITH THERMOSTAT FOR WALL MOUNTING

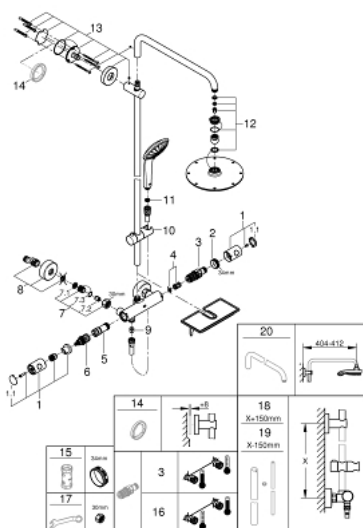


PRODUCT DESCRIPTION

- Colour: chrome
- consisting of:
 - horizontal swivable 450 mm shower arm
 - exposed thermostat with Aquadimmer function
 - allows change between:
 - Rainshower Cosmopolitan 210 metal head shower (28 368 000)
 - spray pattern: Rain
 - with ball joint
 - rotation angle $\pm 15^\circ$
 - hand shower Euphoria 110 Massage (27 221 000)
 - adjustable in height with gliding element
 - Silverflex shower hose 1750 mm 1/2" x 1/2" (28 388 000)
 - GROHE EasyReach tray (26 362 LN0)
 - minimum flow rate 7 l/min.
 - GROHE DreamSpray perfect spray pattern
 - GROHE Long-Life finish
 - GROHE TurboStat compact cartridge with wax thermoelement
 - GROHE SafeStop at 38°C
 - GROHE SafeStop Plus optional temperature limiter at 43°C included
 - SpeedClean anti-lime system
 - Inner WaterGuide for a longer life
 - TwistStop to prevent hose from twisting
 - suitable for instantaneous heaters from 18 kW/h



26 363 000 EUPHORIA SYSTEM 210 SHOWER SYSTEM WITH THERMOSTAT FOR WALL MOUNTING



SELECT SPARE PART: , July 2017 – spareParts.validDate.now

- 1: Costa metal handle 1/2" (Order-nr. 47984000)
 - 1.1: Cap (Order-nr. 6458500M)
 - 2: Fitting ring (Order-nr. 47743000)
 - 3: Thermostatic compact cartridge 1/2" (Order-nr. 47439000)
 - 4: Sound absorber (Order-nr. 47398000)
 - 5: Water flow (Order-nr. 47751000)
 - 6: Aquadimmer (Order-nr. 12433000)
 - 7: Non-return valve (Order-nr. 47189000)
 - 7.1: Dirt strainer (Order-nr. 0726400M)
 - 7.2: Non-return valve (Order-nr. 08565000)
 - 7.3: O-ring $\varnothing 17 \times \varnothing 2$ (Order-nr. 0305500M)
 - 8: S-union (Order-nr. 12662000)
 - 9: Non-return valve (Order-nr. 08565000)
 - 10: Sliding piece (Order-nr. 12140000)
 - 11: Dirt strainer (Order-nr. 0700200M)
 - 12: Inlet valve assembly (Order-nr. 45933000)
 - 13: Outlet shower holder (Order-nr. 48279000)
 - 14: Compensation disc (Order-nr. 27180000)*
 - 15: Socket spanner (Order-nr. 19332000)*
 - 16: GROHE TurboStat cartridge 1/2" (Order-nr. 47175000)*
 - 17: Special spanner (Order-nr. 19377000)*
 - 18: Shower system pipe for retrofitting (Order-nr. 48053000)*
 - 19: Shower system pipe for retrofitting (Order-nr. 48054000)*
 - 20: Shower arm for shower systems (Order-nr. 14047000)*
- * Optional accessories