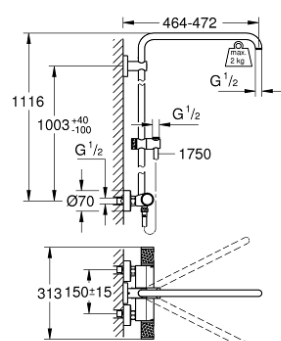


26 241 001 EUPHORIA SYSTEM SHOWER SYSTEM WITH THERMOSTATIC MIXER FOR WALL MOUNTING

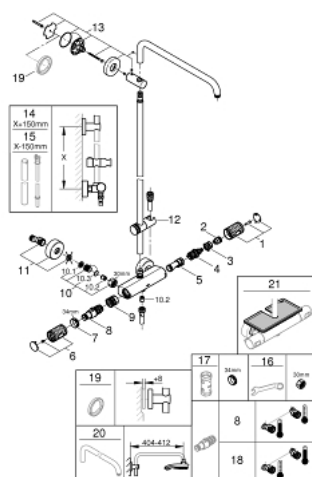


PRODUCT DESCRIPTION

- Colour: chrome
- consisting of:
 - horizontal swivable 450 mm shower arm
 - exposed thermostat with Aquadimmer function
 - gliding element
 - Silverflex shower hose 1750 mm (28 388 000)
 - GROHE TurboStat compact cartridge with wax thermoelement
 - GROHE SafeStop at 38°C
 - GROHE SafeStop Plus optional temperature limiter at 43°C included
 - GROHE CoolTouch no risk of scalding
 - GROHE ProGrip with knurl structure
 - GROHE Long-Life finish
 - GROHE FastFixation upper bracket adjustable
 - Inner WaterGuide for a longer life
 - TwistStop to prevent hose from twisting
 - suitable for instantaneous heaters from 18 kW/h
 - minimum flow rate 7 l/min.
 - optional upgrade: GROHE EasyReach tray (26 362), sold separately
 - professional edition



26 241 001 EUPHORIA SYSTEM SHOWER SYSTEM WITH THERMOSTATIC MIXER FOR WALL MOUNTING



SELECT SPARE PART: , January 2020 – spareParts.validDate.now

- 1: Shut-off handle (Order-nr. 49162000)
 - 2: Stop ring (Order-nr. 47986000)
 - 3: Stop ring (Order-nr. 47965000)
 - 4: Aquadimmer (Order-nr. 47364000)
 - 5: Water flow (Order-nr. 47887000)
 - 6: Shut-off handle (Order-nr. 49160000)
 - 7: Fitting ring (Order-nr. 47743000)
 - 8: Thermostatic compact cartridge 1/2" (Order-nr. 47439000)
 - 9: Race (Order-nr. 47975000)
 - 10: Non-return valve (Order-nr. 47189000)
 - 10.1: Dirt strainer (Order-nr. 0726400M)
 - 10.2: Non-return valve (Order-nr. 08565000)
 - 10.3: O-ring $\varnothing 17 \times \varnothing 2$ (Order-nr. 0305500M)
 - 11: S-union (Order-nr. 12662000)
 - 12: Sliding piece (Order-nr. 48424000)
 - 13: Outlet shower holder (Order-nr. 48279000)
 - 14: Shower system pipe for retrofitting (Order-nr. 48514000)*
 - 15: Shower system pipe for retrofitting (Order-nr. 48515000)*
 - 16: Special spanner (Order-nr. 19377000)*
 - 17: Socket spanner (Order-nr. 19332000)*
 - 18: GROHE TurboStat cartridge 1/2" (Order-nr. 47175000)*
 - 19: Compensation disc (Order-nr. 27180000)*
 - 20: Shower arm for shower systems (Order-nr. 14047000)*
 - 21: GROHE EasyReach tray (Order-nr. 26362LN1)*
- * Optional accessories