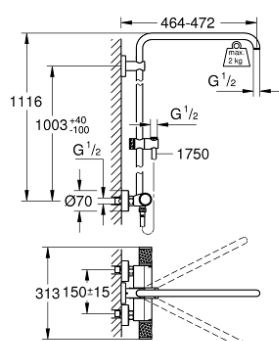


## 26 241 001 EUPHORIA SYSTEM SHOWER SYSTEM WITH THERMOSTATIC MIXER FOR WALL MOUNTING

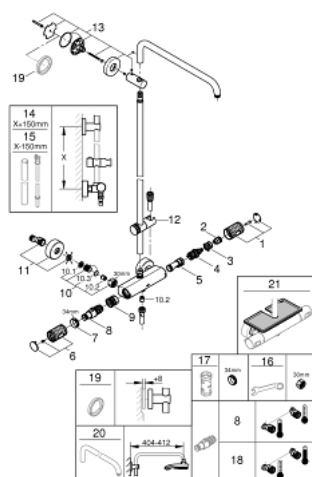


### PRODUCT DESCRIPTION

- Colour: chrome
- consisting of:
  - horizontal swivable 450 mm shower arm
  - exposed thermostat with Aquadimmer function
  - gliding element
  - Silverflex shower hose 1750 mm 1/2" x 1/2" (28 388 000)
  - GROHE TurboStat compact cartridge with wax thermoelement
  - GROHE SafeStop at 38°C
  - GROHE SafeStop Plus optional temperature limiter at 43°C included
  - GROHE CoolTouch no risk of scalding
  - GROHE ProGrip with knurl structure
  - GROHE Long-Life finish
  - GROHE FastFixation upper bracket adjustable
  - Inner WaterGuide for a longer life
  - TwistStop to prevent hose from twisting
  - suitable for instantaneous heaters from 18 kW/h
  - minimum flow rate 7 l/min.
  - optional upgrade: GROHE EasyReach tray (26 362), sold separately
  - professional edition



## 26 241 001 EUPHORIA SYSTEM SHOWER SYSTEM WITH THERMOSTATIC MIXER FOR WALL MOUNTING



### SELECT SPARE PART: , January 2020 – spareParts.validDate.now

- 1: Shut-off handle (Order-nr. 49162000)
  - 2: Stop ring (Order-nr. 47986000)
  - 3: Stop ring (Order-nr. 47965000)
  - 4: Aquadimmer (Order-nr. 47364000)
  - 5: Water flow (Order-nr. 47887000)
  - 6: Shut-off handle (Order-nr. 49160000)
  - 7: Fitting ring (Order-nr. 47743000)
  - 8: Thermostatic compact cartridge 1/2" (Order-nr. 47439000)
  - 9: Race (Order-nr. 47975000)
  - 10: Non-return valve (Order-nr. 47189000)
  - 10.1: Dirt strainer (Order-nr. 0726400M)
  - 10.2: Non-return valve (Order-nr. 08565000)
  - 10.3: O-ring  $\varnothing 17 \times \varnothing 2$  (Order-nr. 0305500M)
  - 11: S-union (Order-nr. 12662000)
  - 12: Sliding piece (Order-nr. 48424000)
  - 13: Outlet shower holder (Order-nr. 48279000)
  - 14: Shower system pipe for retrofitting (Order-nr. 48514000)\*
  - 15: Shower system pipe for retrofitting (Order-nr. 48515000)\*
  - 16: Special spanner (Order-nr. 19377000)\*
  - 17: Socket spanner (Order-nr. 19332000)\*
  - 18: GROHE TurboStat cartridge 1/2" (Order-nr. 47175000)\*
  - 19: Compensation disc (Order-nr. 27180000)\*
  - 20: Shower arm for shower systems (Order-nr. 14047000)\*
  - 21: GROHE EasyReach tray (Order-nr. 26362LN1)\*
- \* Optional accessories