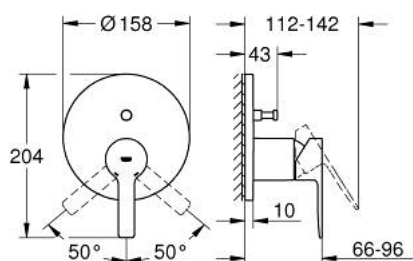


## 24 064 DC1 LINEARE SINGLE-LEVER MIXER WITH 2-WAY DIVERTER

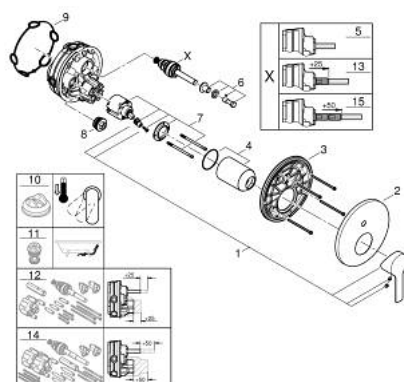


### PRODUCT DESCRIPTION

- Colour: Supersteel
- set for final installation for
- GROHE Rapido SmartBox (35 600/35 604)
- GROHE SilkMove 46 mm ceramic cartridge
- GROHE Long-Life finish
- wall escutcheon with GROHE FastFixation (covered escutcheon- and shaft sealing, covered fixing)
- metal escutcheon, retroactively 6° adjustable
- metal lever
- automatic 2-way diverter
- flow performance: outlet B = 27 l/min, outlet C = 27 l/min
- without roughing-in-set



## 24 064 DC1 LINEARE SINGLE-LEVER MIXER WITH 2-WAY DIVERTER



**SELECT SPARE PART:** , April 2024 – spareParts.validDate.now

- 1: Lever (Order-nr. 46988DC0)
- 2: Escutcheon (Order-nr. 48429DC0)
- 3: Mounting plate (Order-nr. 48440000)
- 4: Shield (Order-nr. 09038DC0)
- 5: Diverter (Order-nr. 48634000)
- 6: Diverter knob (Order-nr. 48637DC0)
- 7: Cartridge (Order-nr. 46048000)
- 8: Non-return valve (Order-nr. 49085000)
- 9: Ball seal dia. 9x6.8 mm (Order-nr. 48360000)
- 10: Temperature limiter (Order-nr. 46375000)\*
- 11: Backflow protection combination (EN1717) (Order-nr. 14055000)\*
- 12: Universal extension set single-lever mixers, 25 mm (Order-nr. 14056000)\*
- 13: diverter (Order-nr. 48635000)\*
- 14: Universal extension set single-lever mixers, 50 mm (Order-nr. 14057000)\*
- 15: diverter (Order-nr. 48636000)\*

\* Optional accessories