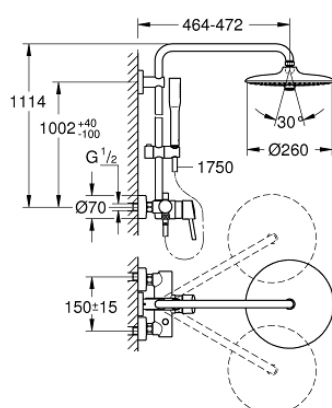


23 061 003 EUPHORIA SYSTEM 260 SHOWER SYSTEM WITH SINGLE LEVER MIXER FOR WALL MOUNTING



PRODUCT DESCRIPTION

- Colour: chrome
- consisting of:
 - horizontal swivable 450 mm shower arm
 - exposed single-lever shower mixer with diverter
 - allows change between:
 - head shower Euphoria 260 (26 457)
 - 3 spray patterns:
 - Rain, SmartRain, Jet
 - with ball joint
 - rotation angle $\pm 15^\circ$
- hand shower Euphoria Cosmopolitan Stick (27 400 000)
- spray pattern:
 - Rain
- adjustable in height with gliding element
- Silverflex shower hose 1750 mm (28 388 000)
- GROHE SilkMove 46 mm ceramic cartridge
- GROHE DreamSpray perfect spray pattern
- GROHE Long-Life finish
- GROHE Water Saving 9.5 l/min flow limiter
- GROHE FastFixation upper bracket adjustable
- Inner WaterGuide for a longer life
- SpeedClean anti-lime system
- TwistStop to prevent hose from twisting
- suitable for instantaneous heaters from 18 kW/h
- minimum flow rate 7 l/min.
- min. recommended pressure 1.0 bar
- professional edition

Technical drawing of the 'Schnurbohrer' (string drill) assembly. The main diagram shows the complete tool with numbered parts 1 through 18. Part 1 is the base plate, 2 is the handle, 3 is the trigger switch, 4 is the motor, 5 is the gear, 6 is the pinion, 7 is the string, 8 is the pulley, 9 is the guide tube, 10 is the string, 11 is the string, 12 is the string, 13 is the string, 14 is the string, 15 is the string, 16 is the string, 17 is the string, 18 is the string. Detailed views show the string (14) with a diameter of X=150mm, the handle (15) with a diameter of X=150mm, and the base plate (18) with a diameter of 30mm. A table at the bottom lists the dimensions for the handle (16) and the base plate (18).

16	30mm	17	40H-412
18	30mm	19	40H-412

- 1: Lever (Order-nr. 46723000)
- 2: Shield (Order-nr. 46025000)
- 3: Cartridge (Order-nr. 46048000)
- 4: Diverter knob (Order-nr. 64309000)
- 5: Diverter (Order-nr. 65655000)
- 6: Non-return valve (Order-nr. 08565000)
- 7: Screw joint (Order-nr. 45044000)
- 7.1: Seal dia. 15x2 mm (Order-nr. 0311900M)
- 8: S-union (Order-nr. 12662000)
- 9: Sliding piece (Order-nr. 12140000)
- 10: Dirt strainer (Order-nr. 0700200M)
- 11: Fibre seal dia. 12x2 mm (Order-nr. 0138900M)
- 12: Dirt strainer (Order-nr. 48007000)
- 13: Outlet shower holder (Order-nr. 48279000)
- 14: Shower system pipe for retrofitting (Order-nr. 48514000)*
- 15: Shower system pipe for retrofitting (Order-nr. 48515000)*
- 16: Special spanner (Order-nr. 19377000)*
- 17: Temperature limiter (Order-nr. 46375000)*
- 18: Shower system pipe for retrofitting (Order-nr. 48054000)*
- 19: Shower arm for shower systems (Order-nr. 14047000)*

* Optional accessories