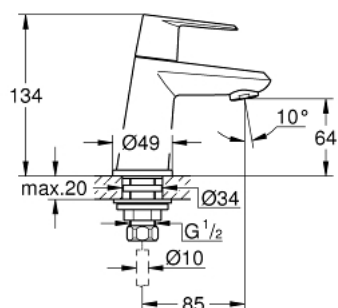


23 051 002 **EURODISC COSMOPOLITAN PILLAR TAP**
XS-SIZE



PRODUCT DESCRIPTION

- Colour: chrome
- single hole installation
- metal lever
- ceramic headpart 1/2", 90°
- GROHE Long-Life finish
- GROHE Water Saving - Less water, perfect flow
- maximum flow rate (at 3 bar): 5 l/min
- SpeedClean mousseur
- union nut 1/2" x 10.5 mm
- min. recommended pressure 1.0 bar
- acoustic group I in accordance with DIN 4109



23 051 002 EURODISC COSMOPOLITAN PILLAR TAP XS-SIZE



SELECT SPARE PART: , March 2016 – spareParts.validDate.now

1: Handle (Order-nr. 48060000)

1.1: Replacement handle connection kit (Order-nr. 45186000)

1.1.1: O-ring $\varnothing 18.2 \times \varnothing 1.7$ (Order-nr. 0392400M)

2: Ceramic headpart, 1/2" (Order-nr. 45882000)

2.1: O-ring $\varnothing 18.2 \times \varnothing 1.7$ (Order-nr. 0392400M)

3: Mousseur (Order-nr. 48159000)

4: Shank fastening assembly (Order-nr. 45000000)

5: Coupling nut 1/2" x 10.5 mm (Order-nr. 1290100M)

5.1: Fibre seal dia. 12x2 mm (Order-nr. 0138900M)

6: Coupling nut 1/2" x 14.5 mm (Order-nr. 1290200M)*

* Optional accessories