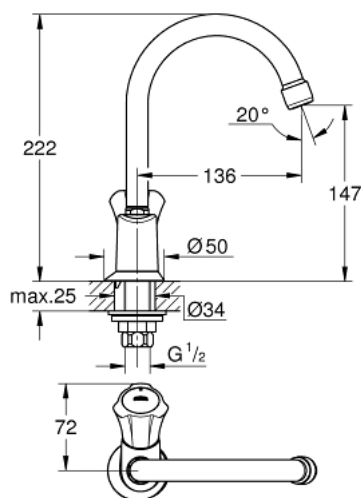


20 393 001 **COSTA L PILLAR TAP**



PRODUCT DESCRIPTION

- Colour: chrome
- metal handle
- heat-insulated
- screwable
- marking: blue
- GROHE Long-Life headpart
- swivel tubular spout with mousseur
- union nut 1/2" with 10.5 mm drilling
- GROHE Long-Life finish



20 393 001 COSTA L PILLAR TAP



SELECT SPARE PART: , December 2007 – spareParts.validDate.now

1: Handle (Order-nr. 45994000)

1.1: Repl. kit f.handle fastening (Order-nr. 0538600M)

2: Headpart 1/2" (Order-nr. 07146000)

2.1: O-ring $\varnothing 6 \times \varnothing 2$ (Order-nr. 0128300M)

2.2: O-ring $\varnothing 18.2 \times \varnothing 1.7$ (Order-nr. 0392400M)

2.3: Ball seal dia. 9x6.8 mm (Order-nr. 0529100M)

3: Spout (Order-nr. 13219000)

3.1: Mousseur (Order-nr. 13928000)

3.2: O-ring dia. 12x2 mm (Order-nr. 0128000M)

4: Escutcheon (Order-nr. 45996000)

5: Shank mounting kit (Order-nr. 45004000)

6: Coupling nut 1/2" x 14.5 mm (Order-nr. 1290200M)

6.1: Fibre seal dia. 12x2 mm (Order-nr. 0138900M)

7: Coupling nut 1/2" x 10.5 mm (Order-nr. 1290100M)

7.1: Fibre seal dia. 12x2 mm (Order-nr. 0138900M)

8: Screw for Costa/Avina products (Order-nr. 48013000)*

* Optional accessories