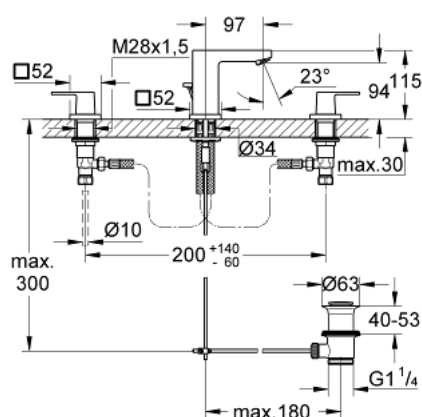


## 20 351 AL0 EURO CUBE 3-HOLE BASIN MIXER S-SIZE

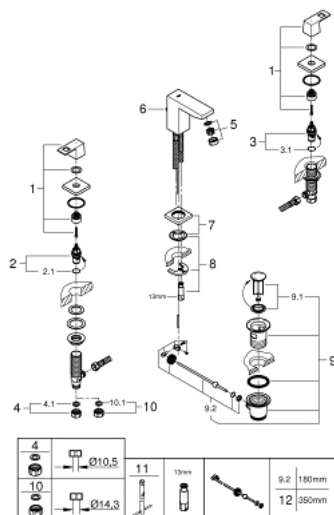


## PRODUCT DESCRIPTION

- Colour: brushed hard graphite
- metal lever
- ceramic headparts 1/2", 90°
- GROHE Long-Life finish
- GROHE FastFixation Plus installation system
- spout with mousseur
- pop-up waste set 1 1/4"
- pressure-proof, flexible connection hoses between spout and side valves
- union nut 1/2" x 10.5 mm

## 20 351 AL0 EUROCUBE 3-HOLE BASIN MIXER S-SIZE

**SELECT SPARE PART:** , March 2019 – spareParts.validDate.now



- 1: Handle pair (Order-nr. 48321AL0)
  - 2: Ceramic headpart, 1/2" (Order-nr. 45882000)
  - 2.1: O-ring ø18.2 x ø1.7 (Order-nr. 0392400M)
  - 3: Ceramic headpart, 1/2" (Order-nr. 45883000)
  - 3.1: O-ring ø18.2 x ø1.7 (Order-nr. 0392400M)
  - 4: Coupling nut 1/2" x 10.5 mm (Order-nr. 1290100M)
  - 4.1: Fibre seal dia. 12x2 mm (Order-nr. 0138900M)
  - 5: Mousseur (Order-nr. 13929AL0)
  - 6: Pop-up rod (Order-nr. 46787AL0)
  - 7: Escutcheon (Order-nr. 48421AL0)
  - 8: Shank mounting kit (Order-nr. 46671000)
  - 9: Pop-up waste set 1 1/4" (Order-nr. 28910AL0)
  - 9.1: Plug (Order-nr. 07182AL0)
  - 9.2: Eccentric rod (Order-nr. 07052000)
  - 10: Coupling nut 1/2" x 14.5 mm (Order-nr. 1290200M)\*
  - 11: Mounting wrench (Order-nr. 19017000)\*
  - 12: Eccentric rod (Order-nr. 07341000)\*
- \* Optional accessories