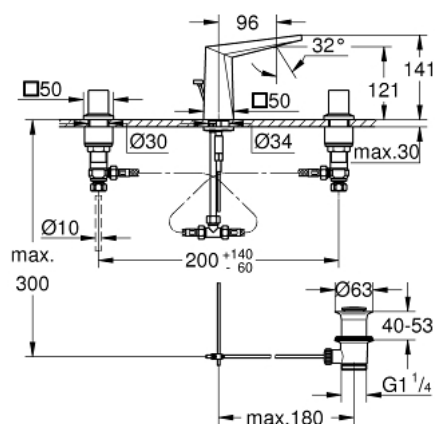


20 342 AL0 ALLURE BRILLIANT 3-HOLE BASIN MIXER S-SIZE

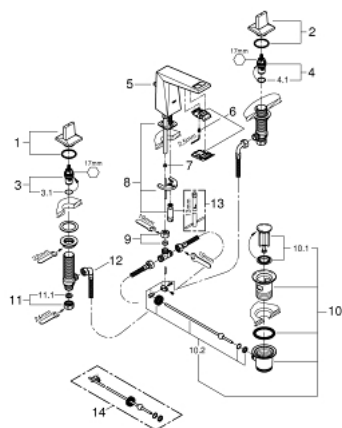


PRODUCT DESCRIPTION

- Colour: brushed hard graphite
- ceramic headparts 1/2", 90°
- GROHE Long-Life finish
- GROHE Water Saving 5.0 l/min. flow limiter
- low spout with integrated mousseur
- pop-up waste set 1 1/4"
- pressure-proof, flexible connection hoses between spout and side valves
- min. recommended pressure 1.0 bar



20 342 AL0 ALLURE BRILLIANT 3-HOLE BASIN MIXER S-SIZE



SELECT SPARE PART: , March 2018 – spareParts.validDate.now

- 2: Handle pair (Order-nr. 48320AL0)
- 3: Ceramic headpart, 1/2" (Order-nr. 45882000)
- 3.1: O-ring $\varnothing 18.2 \times \varnothing 1.7$ (Order-nr. 0392400M)
- 4: Ceramic headpart, 1/2" (Order-nr. 45883000)
- 4.1: O-ring $\varnothing 18.2 \times \varnothing 1.7$ (Order-nr. 0392400M)
- 5: Pop-up rod (Order-nr. 46787AL0)
- 6: Race (Order-nr. 46794AL0)
- 7: Flow limiter (Order-nr. 48160000)
- 8: Shank mounting kit (Order-nr. 46671000)
- 9: Compression union 3/8" (Order-nr. 12914000)
- 10: Pop-up waste set 1 1/4" (Order-nr. 28910AL0)
- 10.1: Plug (Order-nr. 07182AL0)
- 10.2: Eccentric rod (Order-nr. 07052000)
- 11: Coupling nut 1/2" x 10.5 mm (Order-nr. 1290100M)
- 11.1: Fibre seal dia. 12x2 mm (Order-nr. 0138900M)
- 12: Flexible connection hose (Order-nr. 45704000)
- 13: Mounting wrench (Order-nr. 19017000)*
- 14: Eccentric rod (Order-nr. 07341000)*

* Optional accessories