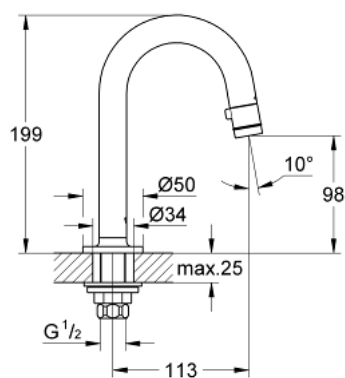


20 201 DC0 **UNIVERSAL PILLAR TAP 1/2"**

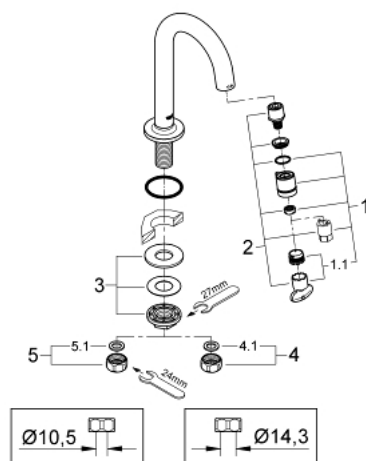


PRODUCT DESCRIPTION

- Colour: Supersteel
- C-spout
- flow-stop mousseur
- ceramic disk headpart
- union nut 1/2"
- with 10.5 mm drilling
- GROHE Long-Life finish
- GROHE Water Saving - Less water, perfect flow
- maximum flow rate (at 3 bar): 5 l/min
- projection 113 mm



20 201 DC0 **UNIVERSAL PILLAR TAP 1/2"**



SELECT SPARE PART: , October 2019 – spareParts.validDate.now

1: Handle (Order-nr. 48041DC0)

2: Headpart (Order-nr. 48042000)

3: Shank mounting kit (Order-nr. 45004000)

4: Coupling nut 1/2" x 14.5 mm (Order-nr. 1290200M)

4.1: Fibre seal dia. 12x2 mm (Order-nr. 0138900M)

5: Coupling nut 1/2" x 10.5 mm (Order-nr. 1290100M)

5.1: Fibre seal dia. 12x2 mm (Order-nr. 0138900M)