

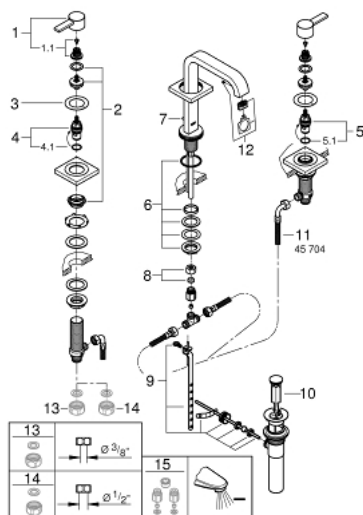
20 191 00A **ALLURE 3-HOLE BASIN MIXER**
M-SIZE



PRODUCT DESCRIPTION

- Colour: chrome
- with lever handles
- metal escutcheons
- ceramic headparts 1/2", 90°
- GROHE Long-Life finish
- spout with mousseur
- pressure-proof, flexible connection hoses between spout and side valves
- pop-up waste set 1 1/4"
- max. flow rate 4.5 l/min (1.2 gpm)

20 191 00A ALLURE 3-HOLE BASIN MIXER M-SIZE



SELECT SPARE PART: , March 2020 – spareParts.validDate.now

- 1: Handle (Order-nr. 48043000)
 - 1.1: Replacement handle connection kit (Order-nr. 45186000)
 - 1.1.1: O-ring $\varnothing 18.2 \times \varnothing 1.7$ (Order-nr. 0392400M)
 - 2: Extension (Order-nr. 48045000)
 - 3: Sealing washer (Order-nr. 48047000)
 - 4: Ceramic headpart, 1/2" (Order-nr. 45882000)
 - 4.1: O-ring $\varnothing 18.2 \times \varnothing 1.7$ (Order-nr. 0392400M)
 - 5: Ceramic headpart, 1/2" (Order-nr. 45883000)
 - 5.1: O-ring $\varnothing 18.2 \times \varnothing 1.7$ (Order-nr. 0392400M)
 - 6: Shank fastening assembly (Order-nr. 45025000)
 - 7: Pop-up rod (Order-nr. 65196000)
 - 8: Compression union 3/8" (Order-nr. 12914000)
 - 8.1: Ball seal dia. 9x6.8 mm (Order-nr. 45279000)
 - 9: Ball rod (Order-nr. 48332000)
 - 10: Plug (Order-nr. 48331000)
 - 11: Flexible connection hose (Order-nr. 45704000)
 - 12: Mousseur (Order-nr. 13220000)
 - 13: Coupling nut 1/2" x 10.5 mm (Order-nr. 1290100M)*
 - 14: Coupling nut 1/2" x 14.5 mm (Order-nr. 1290200M)*
 - 15: Water saving set (Order-nr. 48189000)*
- * Optional accessories